

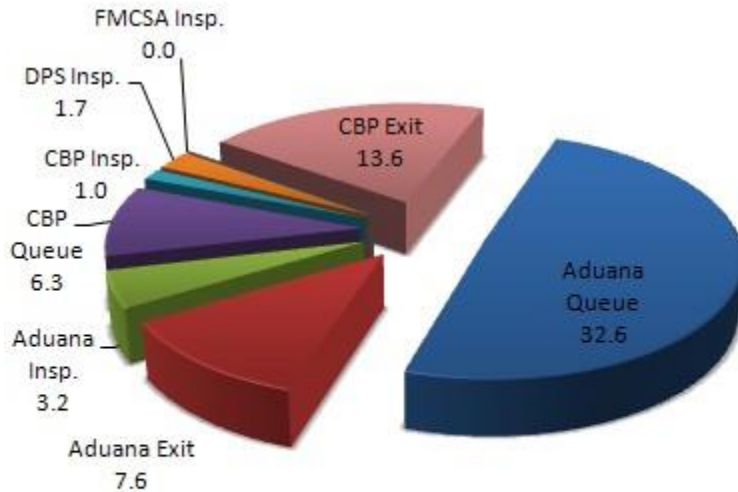




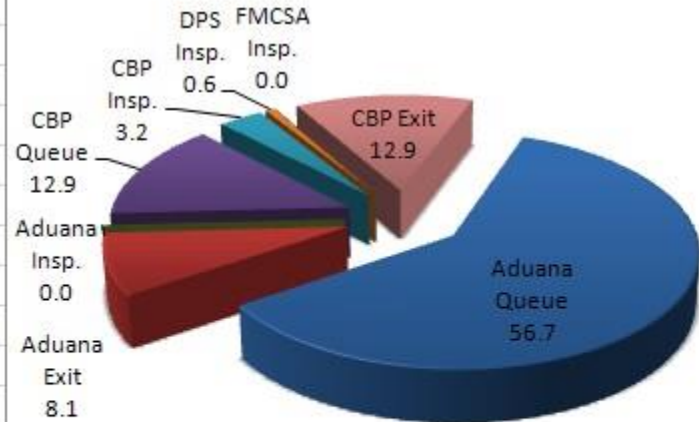
Otay Mesa Port of Entry - NB Commercial Crossing Times by Trusted Trade

| Shipment Type | Aduana Queue | Aduana Exit | Aduana Insp. | CBP Queue | CBP Insp. | DPS Insp. | FMCSA Insp. | CBP Exit | Average Total |
|-----------------|--------------|-------------|--------------|-----------|-----------|-----------|-------------|----------|---------------|
| FAST | 32.6 | 7.6 | 3.2 | 6.3 | 1.0 | 1.7 | 0.0 | 13.6 | 66.1 |
| Standard | 56.7 | 8.1 | 0.0 | 12.9 | 3.2 | 0.6 | 0.0 | 12.9 | 94.5 |
| Average Time | 44.8 | 7.8 | 1.6 | 9.6 | 2.1 | 1.2 | 0.0 | 13.5 | 80.6 |
| FAST Difference | -24.1 | -0.5 | 3.2 | -6.6 | -2.3 | 1.1 | 0.0 | 0.7 | -28.4 |

Otay Mesa Port of Entry Average Times By Segment FAST

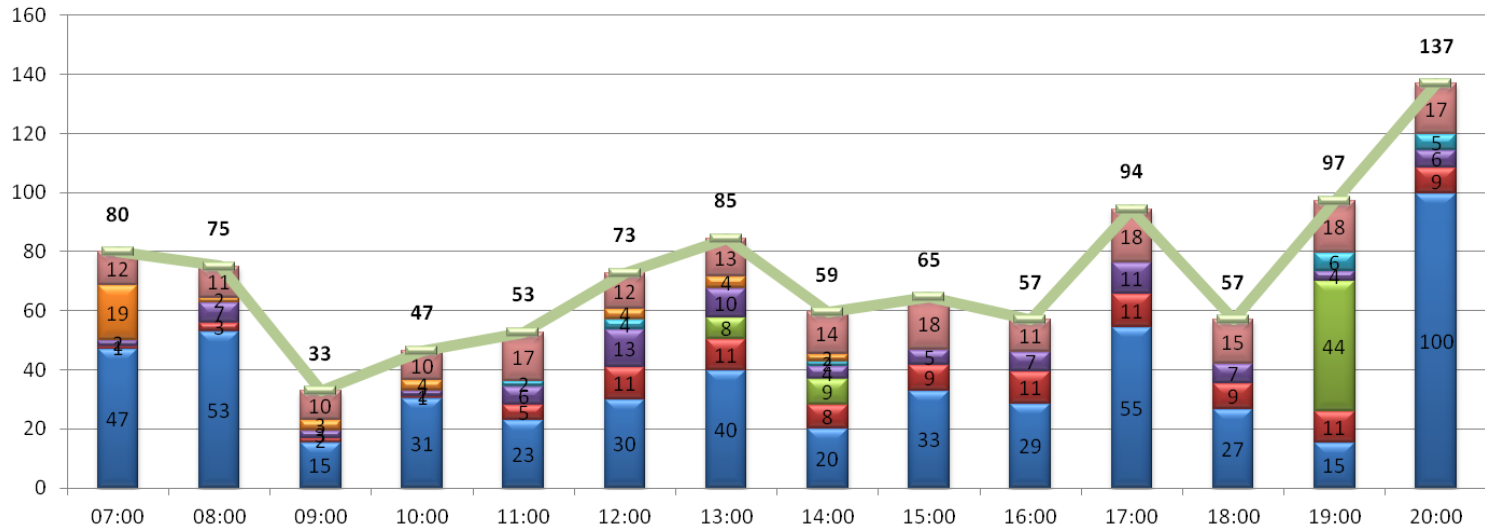


Otay Mesa Port of Entry Average Times By Segment STANDARD (Non FAST)

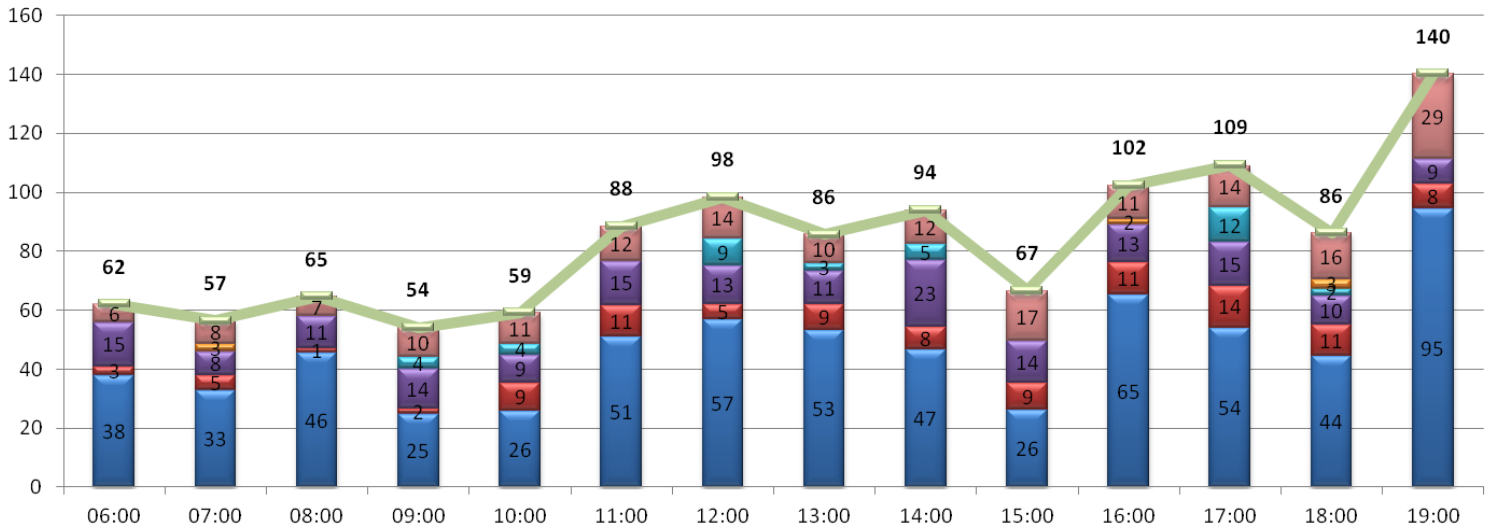


Otay Mesa Port of Entry Average Segment Times By Hour

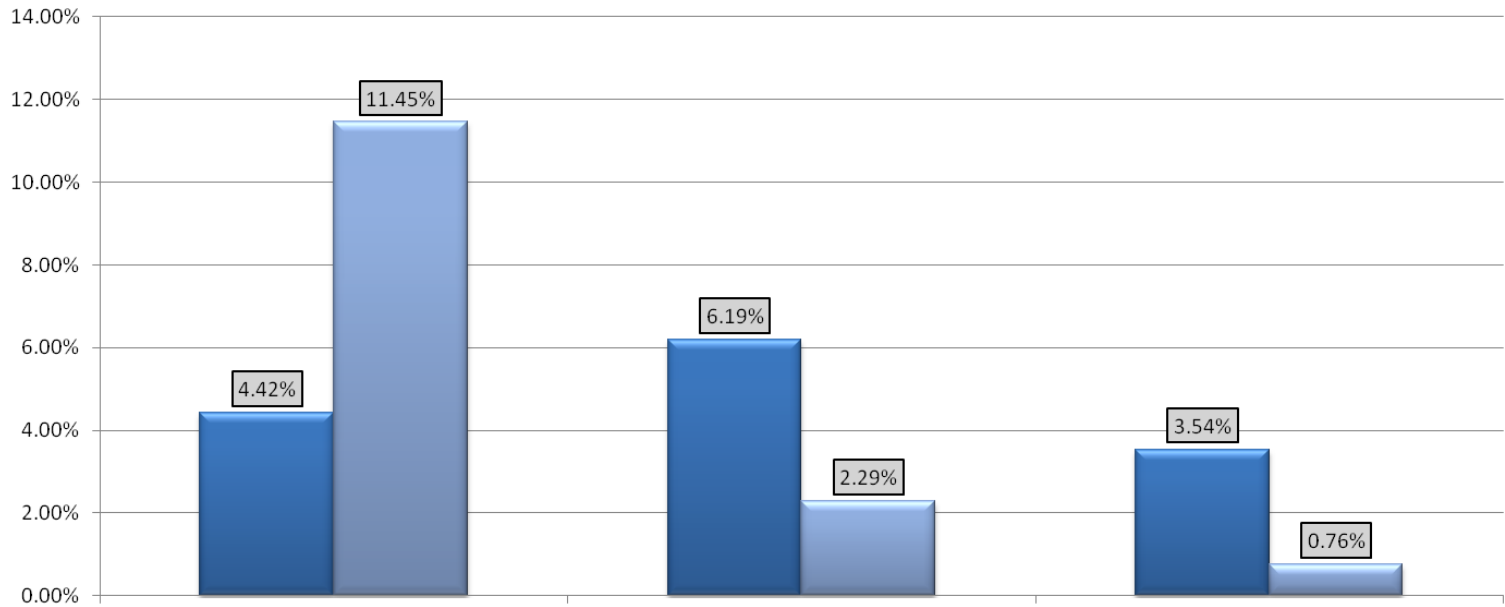
FAST



STANDARD (Non FAST)



Percent Secondary Inspections by Trusted Trade



Average Time in Secondary Inspection by Trusted Trade

